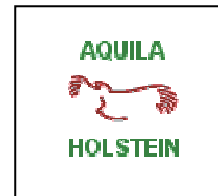


## AQUILA FARM



**AVERAGE PRODUCTION 305 days kg 10500 fat 3,8 % prot 3,4 %**

**AVERAGE SCORE 85 18 EX 94 VG 39GP**

We started our herd in 1978 with two cows imported from the United States.

From this COW FAMILIES, we have till today arrived at **7-8 GENERATIONS of VG or EX.**

We have nearly sold 250 bulls to A.I.Stud all around the World .

In all this 28 years much bulls exit from progeny tests in the TOP in Italy ( **Aquila Tradition Turbo, Aquila Mascot Dreamer, Aquila Aerostar Detector, Aquila Mascot Detail, Aquila Blackstar Benson, Aquila Wells Maximum, Aquila Winchester Stiff , Aquila Marshall Yucon** and in this moment **Aquila Garter Lennitz.**

In the last years also in others Countries bulls exit from our farm and ours cows family to have very goods results: **Aquila Blackstar Benson** 1st bulls for 3 years in Switzerland 2000-'01-'02, **Monluel** in the top bulls for INEL in French 2001-'02-'05, **Aquila Patron Lucente** in top bulls for TOP in United Kingdom 2002-'03-'04-'05, **Aquila Lord Lilly Laddie** in the top bulls for TOP in U.K. during 2002-'03-'04, **Jacinto** in top bulls in Germany for total index, milk and protein 2006-'07, **Montoya** in top 100 bulls in Germany for total index 2007 and **Jelder** in top bulls in Germany for total index, milk and protein and best Jester's son in world 2007-'08, **Welcom Erick** in top list for TPI and Milk in US.

Aquila cows have sent embryos to U.S. ,CANADA , AUSTRALIA , NEW ZELAND , SOUTH AFRICA , JAPAN, SWEDEN and to all the EUROPEAN COUNTRIES .

During the last 25 years we have always reached in the first 3 positions as the best herd in ITALY for index, Total Economic index (I.L.Q.M.: based on protein and tipe ; and PFT : based protein, functionality and tipe ). and Protein Kilograms. **IN THE LAST SEVEN YEARS WE HAVE ALWAYS BEEN AT THE TOP.**

AQUILA HOLSTEIN is the **BEST FARM IN ITALY FOR GOLD MEDAL** with **33 cows GMD** and **one bull GM** ( AQUILA MASCOT DREAMER ).

We have about **40 COWS THAT ARE IN THE TOP 1%** of the breed for index.

**We breed in order to have BIG and STRONG cows with DEEP OPEN RIBS, GOOD UDDER and STRONG FEET AND LEGS . We are convinced that with these features, our cows can give a lot of milk and protein and live longer .**

**WE WOULD LIKE TO THANK YOU ALL THE PEOPLE WORLDWIDE WHICH HAVE BELIEVED IN OUR BREEDING PROGRAMM AND HAVE INVESTED IN OUR GENETICS.**

### **AQUILA FARM**

**Via Cascina AQUILA 25024 LENO (BS) ITALY**

**Tel.\Fax 030/9067335**

**WEB-SITE [www.aquilaholstein.com](http://www.aquilaholstein.com) or it**

**E-MAIL [info@aquilaholstein.com](mailto:info@aquilaholstein.com)**



## Vanessa's family



### AQUILA CLEITUS VANESSA EX90 VGMS

IN TOP COWS FOR **GMD** IN ITALY WITH 8 STARS

1<sup>st</sup> latt. 305 days 10025 Kg 4,10%gr 3,40%pr.

2<sup>nd</sup> latt. 305 days 12416 Kg 4,20%gr 3,40%pr.

3<sup>rd</sup> latt. 305 days 13073 Kg 4,60%gr 3,40%pr.

Vanessa is one of the best brood cow in our breed.

At the moment she has 23 daughters in all Europe (7 EX and 16 VG , 22 VG or EX in udder ).

Among these VANESSA is dam of: the 1st cow in Switzerland in the years 97'-98'-99' per index (A. MASCOT EDNA);

The 1st cow in Italy in 97' (A.MASCOT DAMA); one of the top 50 cows in Holland for proteins in 97' (A. MASCOT DESIRE').

Vanessa's 1st son by BLACKSTAR ( A.B. BENSON ) is one of the best bulls of "2nd CROP"

for I.L.Q.M., TIPE and U. D. C. in Italy 2000/2001 and 1<sup>st</sup> bull in Switzerland 2000.

The best bulls exit from Vanessa's family in this moment are **A.P.LUCENTE** (Patron x Luke in U.K.), **JACINTO** (Jocko x Fatal in top bulls in Germany '06-'07), **JELDER** (Jhester x Basar in top bulls in Germany 2007), **MONTROYA** (R.Marshall x Patron in top 100 bulls in Germany 2007). She was also some very good bulls : **LYLLIAL STORMY** (Storm x Vanessa) very complete bull in U.K. and **A.L. LADDIE** in top bull in U.K.'02-'03-'04;**G.MTOTO IMPULSO**, **C.P. LANDIS** and **C. LAFAIETTE** in top 100 bulls in Italy '03-'04; **A.M.YUCON** in top 100 bull in Italy 2007.

Cow of interest from Vanessa in this moment are :

**AQUILA PATRON LEANE VG89 EXMS** aAa code 624 ( you see nexts pages)

1<sup>st</sup> lact. 305 kg 11173 fat 3,90% kg 431 prot 3,60% kg 392

LEANE has 1 TUGOLO VG87 VGMS, 3 R. MARSHALL VG VGMS, 2 STORMATIC VG VGMS and 1 ADAM.

**AQUILA PATRON LAURIA EX90 VGMS in 3<sup>rd</sup> lact.**

2<sup>nd</sup> lact. 305 kg 10585 fat 4,10% kg 436 prot 3,43% kg 363

LAURIA has a : 1 **BROCK EX92 EXMS** with daughters by Marshall VG89VGMS and

Sept.Storm bred to Goldwyn; 1**MARSHALL VG87 VGMS** with daughter by Mr. SAM.

1**GARTER VG87 VGMS** with bull by Shottle and with daughter by Marion ; 1 **FBI**.

**HILLBRAD PATRON VANESSA2 EX92 EX95MS**

Full sister of Leane and Lauria at Stardale Holstein in UK. Her daugh. By Leduc sold for 15200 euro in a U.K. sale.

**AQUILA GIBBON LYLIAN VG86 in 2<sup>nd</sup> lact.**

2<sup>nd</sup> lact. 305 kg 12805 fat 3,80% kg 484 prot 3,51% kg 451

LYLIAN has 1 daughter by **STEVEN VG86 VGMS** with daughters to LANCELOT,

GARRISON and DOLMAN ; and **MANAT VG86 VGMS** with daughter by JEFFERSON.

**VANESSA has again daughters by :**

**JUROR EX90 VGMS** bred to **RAMOS** and with daughter **SEPTEMBER STORM** bred to **Blitz**.

**C. LEADER VG87 VGMS in 2<sup>nd</sup> lact.** with daughter by **SEPTEMBER STORM** bred to **Marcus**.



**NEW HOPE NEIL HILITE VG 88**

Life 7 laccs. 66617 4,20% 3,34%

Hilite is one of our two fondation cows. She lived for

**12 years and had 10 daughters , 3 EX e 7 VG (Average score 87 pti).**

From her cow family over 100 bulls have been sold to A.I. in Europe.

Size , style and production with very good components are something you can find in every HILITE's discendent , it doesn't matter with which bull you mate this cows . Her grand-daughters and great grand-daughters have the top index and winning shows .



**AQUILA BLACKSTAR BETA EX 94 EEEE GMD aAa code 462**





**IN TOP COWS FOR GMD WITH 7 STARS**



  
**IN ITALY**

**1<sup>st</sup> lact. 305 days kg 11260 fat. 3,50% prot. 3,00%**  
**2<sup>nd</sup> lact. 305d kg 12149 fat. 3,50% pr. 3,10%**
**3<sup>rd</sup> lact. 305d kg 15720 fat. 3,70% pr. 3,30%**

VANESSA' s best daughter. She is a super cow, big open deep ribbed with a fantastic udder . BETA made the highest production record in our herd.

**BETA is a full sister of BENSON, dam of A.NICK GLEN and she belongs to the same family of LUCENTE (2003), DASHER (1998) , LINO (2002), STORMY (2004), JACINTO (2006), JELDER (2007), MONTOYA (2007) and YUCON (2007).**

**She has 10 daughters in milk ( 4 EX and 6 VG, ALL VG or EX in udder....for the moment !...):**

- **AQUILA PRELUDE EIELLEN VG86 VGMS**
- ♣ **AQUILA PRELUDE EPICA EX90 VGMS 3<sup>rd</sup> lact 305 kg 13620 fat 4,10% kg 527 pr 3,40% kg 436**  
Epica is tall 181 cm and has : 1 daughter by **FORMATION EX90 EXMS**  
1 daughter by **JUROR VG89 VGMS in 3<sup>rd</sup> lact.** Bred to BAXTER and with daughters by **TRIBUTE-RF VG86 VGMS**  
bred to Baxter, **TALENT-RF VG87 VGMS** at 2yrs bred to Elayo-red and **BOSS IRON.**
- ♣ **AQUILA PRELUDE EPISTOLA VG89 VGMS** sold in U.K.
- ♥ **AQUILA NICK GAMMA VG89 VGMS**
- ◆ **AQUILA NICK GRAZIA EX90 VGMS** with daughters by **TERRASON VG87 VGMS** and **SEPT. STORM.**
- **AQUILA MASCOT DIVA VG85 VGMS** is dam of A. RUDOLF LINO in top bulls in Italy 2002 for longevity.
- ♣ **AQUILA MISTIQUE ILDE EX92 EXMS** with daughters by **JOCKO BESN VG89 VGMS,MANAGER** and **BUCKEYE.**
- ♣ **AQUILA HUNTER KAPPA VG87 VGMS** at 2 yrs sold in U.K.
- ♥ **AQUILA RUDOLF MEGABETA EX90 VGMS 2<sup>nd</sup> lact. 305 kg 12681 fat 3,10% pr 3,20%**  
Megabeta, has : 1 daughter by **BANDERAS VG85.**  
1 daughter by **CONVINCER EX90 VGMS** in top 20 cows candidate for  
Brussell 2004 that has daughters by **CHAMPION GP83** at 2yrs and **JEFFERSON.**
- ♣ **AQUILA MANATTHAN ROSEMARY VG88 VGMS in 2<sup>nd</sup> lact.** with daughters by **ALLEN** and **BLITZ.**
- ◆ **AQUILATERRASON THESIS VG87 VGMS** at 2yrs with pregnancies by **TALENT.**

BETA has pregnancies by **TERRASON.**

BETA has again embryos by **TERRASON, TRIBUTE , ASTRE** and **CHAMPION.**

**AQUILA HUNTER KAPPA VG87 VGMS at 2yrs** →

Sold in U.K. at Sherington Holstein.



← **AQUILA MASCOT DIVA VG 85 VG MS at 2yrs**

**1<sup>st</sup> lact. 305 days kg 11434 fat 3,40% prot 3,10%**

Diva is one of MASCOT's best.

She has of things we are looking for in a young cow. She is the daughter of BETA.

**Diva is dam of a top bull in Italy 2002 A. RUDOLF LINO.**

She has all daughters VG and her 2 MEGABUCK VG to have daughters by **TUGOLO VG85**

**AOUILA FINLEY SAMANTA VG86 VGMS at 2 years**

7

**3  
GENERATIONS  
IN FARM**



**LOW  
SOMATICS  
CELLS**

**FINLEY VG86 VGMS x TUGOLO OSELLA VG87 VGMS x PATRON LEANE VG89 EXMS GMD x  
x CLEITUS VANESSA EX90 VGMS GMD x NEIL HILITE VG88**

**1<sup>st</sup> lact. 305 days kg 11118 fat 4,33% fat kg 480 prot 3,59% prot kg 398  
Production capacity : milk +8,0% fat + 26,1% pr.+18,2%**

Samanta is a super cow with very nice udder and feet and legs. She is tall, long, open rib with very wide rump. Samanta has much contract for bulls and embryos with A.I.Stud. Samanta has already daughters by **JARDIN** and **JOSE**. She is in permanent flushing and has pregnancies by **INTRUDER** and **LAURIN**. Nexts flush by **BAXTER** and **LAURIN**.

**AOUILA FINLEY TATIANA VG87 VGMS in 2<sup>nd</sup> lact.**

**HIGH  
COMPONENTS**



**FINLEY VG87 VGMS x TUGOLO OSELLA VG87 VGMS x PATRON LEANE VG89 EXMS GMD x  
x CLEITUS VANESSA EX90 VGMS GMD x NEIL HILITE VG88**

**1st lact. 305 days kg 11139 fat 4,18% fat kg 465 prot 3,40% prot kg 377  
Production capacity : milk +10,7% fat + 23,8% pr.+14,5%**

Tatiana is full sister of Samanta and very dairy cow with super bone quality and open rib, she has very nice udder and rump. Tatiana has 2 daughters by **BOLTON** and a bull by **ZESTY** for ALTA. She is available for flushing.

# Lucente's Sisters



**AQUILA MTOTO NATALINA VG87 VGMS in 1<sup>st</sup> lact.**



**6<sup>th</sup> GENERATION  
VG or EX**

**LOW SOMATICS  
CELLS**



**MTOTO VG87 x LUKE EX90 GMD x MELWOOD EX90 GMD x BLACKSTAR EX90 x C.VANESSA EX90 GMD**

**1<sup>st</sup> lact. 305 days kg 12273 fat. 4,17% fat kg 507 prot. 3,51% prot kg 427**

NATALINA was one of the best cows in 1<sup>st</sup> lact. at Aquila Farm. She is a daughter of A.L.Galizia EX90 VGMS and exit from the same pedigree of 2 very populars bulls **BENSON** and **LUCENTE**.

**Natalina is the 6<sup>th</sup> generation of VG or EX with VG or EX in udder and has 3 cows GMD in her pedigree**

Natalina is a super cow, very tall, long, open rib, beautyfull udder with excellent textured, super feet and legs and bone quality, very wide rump with perfect angle. Natalina was much contracts around the world.

She has nice daughters by **O-MAN (VG85)**, **LAUDAN (VG86 VGMS)**, **OKENDO(nice)** with daughters and bulls by Dolman, Jose. Lou and Baxter. **MODEST** breeds to Billion and Pagewire and **MAGICAL** bred to Pagewire.

## **AQUILA O-MAN TEA VG85 at 2 years**



**NEVER  
PROBLEMS**

**COW FOR  
HERD**



**O-Man VG85 x Mtoto Natalina VG87 VGMS at 2yrs x Luke Galizia EX90 VGMS GMD x Melwood EX90 EXMS x Blackstar EX90 VGMS GMD x Vanessa EX90 VGMS GMD x Neil VG88**

**1<sup>st</sup> lact. 305 days kg 11857 fat 4,20% fat kg 466 prot 3,44% prot kg 376**

Tea is the 7<sup>th</sup> generation of VG or EX with 4 generations of EX and 3 cows GMD in pedigree. She is a very good cow for herd with never problems. She is strong with super feet & legs and functional udder. She is available for Flushing.

Nexts flushing with **ELEVE, JANGO** and Roumere.

**AQUILA PATRON LAURIE VG87 VGMS in 2<sup>nd</sup> lact. GMD**



**LUCENTE's  
FULL  
SISTER**

**PATRON VG87 x LUKE EX90 x MELWOOD EX90 x BLAKSTAR EX90 x CLEITUS EX90 x NEIL VG88**  
2<sup>nd</sup> lact. 305 days kg 13407 fat 3,50% kg 459 prot 3,30% kg 434  
4<sup>th</sup> lact. 305 days kg 12664 fat 3,75% kg 465 prot 3,20% kg 393

LAURIE is Patron from LUKE GALIZIA, is a very dairy cow with nice udder and is the **6th generation VG or EX**. She has **in her pedigree 4 cows GMD !!!**  
Laurie is full sister of very popular bull and sire of son around the world for some years A. Patron Lucente in U.K. LAURIE has :  
-1 daughter by **RAMOS**.  
-1 **EMERSON VG88 VGMS** with daughters by TITANIC GP83 at 2yrs bred to Baxter and GOLDWYN bred to Airraid.  
-1 **BRETT TV VG86 VGMS** with daughter by ADAM VG85 VGMS at 2yrs (Aquila Adam Siky).  
-1 **MAGNA VG87 VGMS** with daughters by Mr.SAM bred to Intruder and BUCKEYE.

**AQUILA ADAM SIKY VG85 VGMS at 2 years**



**4 COWS  
GMD  
IN HER  
PEDEGREE**

**ADAM VG85 x BRETT VG86 x PATRON VG87 x LUKE EX90 x MELWOOD EX90 x  
x BLAKSTAR EX90 x CLEITUS EX90 x NEIL VG88**

1st lact. 305 days kg 12047 fat 4,01% fat kg 484 prot 3,41% prot kg 408  
Production capacity : milk +13,4% fat + 22,9% pr.+17,5%

Siky is a milk machine cow that produce a lot of milk with very good components. She is very dairy with very good udder and super feet and legs. Siky is the **7<sup>th</sup> generation of VG or EX** with **4 cows GMD** and **4 cows EX in her pedigree**. Siky has already a beautyfull daughters by **SHOTTLE** bred to BOLTON and **JOSE**.  
She is bred to **PAGEWIRE**.

## AQUILA TUGOLO ORAKEL TM TV VG88

3 COWS  
GMD  
IN PEDEGREE



4 GENERATION OF  
EX  
IN PEDEGREE

Tugolo VG88 x Luke EX90 GMD x Mellwood EX90 x Blackstar EX90 GMD x Cleitus EX90 GMD x Neil VG88

1<sup>st</sup> lact. 305d kg 11329 fat. 3,60% fat kg 403 prot. 3,35% prot kg 377  
2<sup>nd</sup> lact. 305 days kg 13170 fat 4,37% fat kg 584 prot. 3,79% prot kg 500

ORAKEL is very production cow with very good component. She is very tall, open rib, super bone quality and beautiful feet and legs. Orakel has already some bulls in A.I. and has again much contracts for bulls and embryos around the Europe.

Orakel has **strong family of VG or EX with deep pedigree** and has also **3 cows GMD in pedigree**.

**She is maternal sister of LUCENTE and full sister to TIVOLI.**

**ORAKEL is in top cows for PFT and protein in Italy** and has :

- 2 daughters by **MANAT ( VG86 and VG87 )** with daughters by **Morty VG85, Dawson VG85, Mr Sam and Merinit.**
- 1 daughter by **STEVEN ( VG85 at 2yrs )** with daughter by **Manager.**
- 1 daughter by **LANCELOT VG86** with bull by **BAXTER** with daughter by **Toystory.**
- 2 daughters by **SHOTTLE in top heifers in Italy** : one bred to **BILLION** and one by **LAURIN.**

ORAKEL is in 3<sup>rd</sup> lact. and has also a daughter by **TOYSTORY**, bulls by **MARION** and **FBI.**

**Orakel is bred to BAXTER.**

## AQUILA STEVEN RAKEL VG85 at 2years



Steven VG85 x Tugolo VG87 x Luke EX90 x Mellwood EX90 x Blackstar EX90 x Cleitus Vanessa EX90 x Neil VG88

1<sup>st</sup> lact. 305 days kg 10757 fat 4,30% kg 465 prot 3,68% kg 396  
Production capacity : milk +14,3% fat +34,7% prot +25,7%

Rakel the best Steven's daughter in Italy and is an atypical pedigree, that **not has Mascot and Bellwood blood in pedigree.** She was in top cows for PFT and protein in Italy '04-'05.

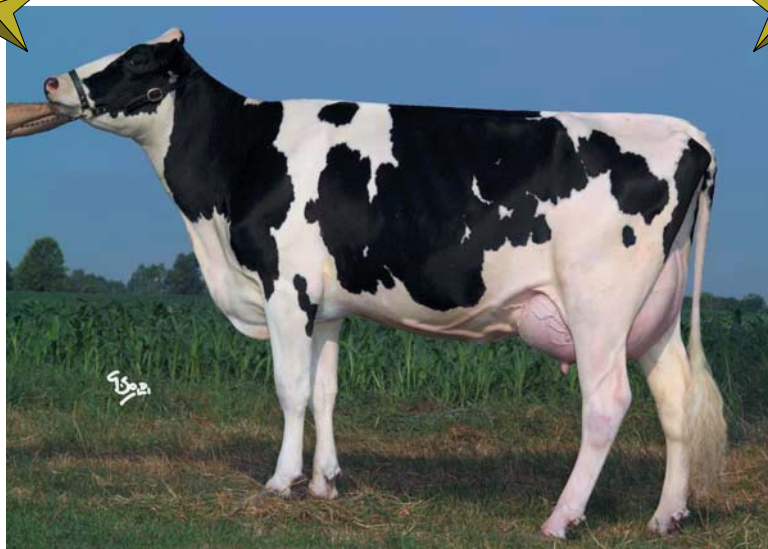
Her dam, **Orakel**, is a **maternal sister of LUCENTE** and she has **3 cows GMD in pedigree.**

Rakel has super feet and legs with excellent bone quality. She is strong in front, open rib and has a rear udder high and wide.

Rakel has a daughter by **MANAGER** bred to **Baxter.**

★ AQUILA MANAT ROSSELLA VG88 ★

4 GENERATION OF  
**EX**  
IN PEDEGREE



Manat VG88 x Tugolo VG88 x Luke EX90 x Mellwood EX90 x Blackstar EX90 x Cleitus EX90 x Neil VG88

1 <sup>st</sup> lact. 305 days	kg 11447	fat 4,08%	kg 466	prot 3,51%	kg 400
2 <sup>nd</sup> lact. 305 days	kg 13687	fat 3,70%	kg 500	prot 3,10%	kg 420
3 <sup>rd</sup> lact. 305 days	kg 14865	fat 3,70%	kg 529	prot 3,30%	kg 469

Rossella is the 7<sup>th</sup> generations of VG or EX and has 3 cows GMD in pedegree.

**Rossella exit from same family of LUCENTE** and she is a very production cow that produce a lot of milk with very good components. Rossella is tall and is very balanced between dairy caracters and strength.

She has daughters by **DAWSON VG85 at 2 years** (with daughter by SHOTTLE bred to Pagewire and bull by DOLMAN ), **Mr.SAM** (with bull by Intruder) and very nice **MERINIT** (with bull by Airraid).

Rossella is bred to **AIRRAID**.

★ AQUILA MANAT ROSSANA VG86 VGMS at 2 years ★



Manat VG86 x Tugolo VG88 x Luke EX90 GMD x Mellwood EX90 x Blackstar EX90 x Cleitus EX90 x Neil VG88

1 <sup>st</sup> lact. 305 days	kg 10320	fat 4,37%	kg 451	prot 3,70%	kg 384
production capacity : milk +11,0% fat +32,6% prot +23,4%					

Rossana is full sister of Rossella and exit from **same family of LUCENTE**.

She is the 7<sup>th</sup> generations of VG or EX with 3 cows GMD in pedegree.

Rossana was **in top 50 cows for PFT in Italy** (index '04-'05).

Rossana is **VG86 VGMS**, she is very dairy, I think too dairy, but with **super udder and feet and legs**.

Rossana had much contracts for bulls and embryos and is dam of a **MORTY VG87 VGMS** and a **super Mr. SAM n.c.l.** available for flushing.

Rossana continue her life in a Saxony Farm... Congratulation at her new breeder!

**AQUILA MAGNA RAFFY VG88 VGMS in 2<sup>nd</sup> lact.**

**Show cow**



**LOGLIVED  
COWS FAMILY**

**MAGNA VG88 VGMS x AEROSTAR DAWN EX90 VGMS GMD x NED BOY VG85 x NEIL VG88 GMD**

1<sup>st</sup> lact. 305 days kg 11525 fat 4,15% fat kg 479 prot 3,56% prot kg 410  
2<sup>nd</sup> lact. 305 days kg 13217 fat 4,10% fat kg 529 prot 3,70% prot kg 478

Raffy is a beautiful cow that combine **show tipe with high index.**

She is tall, dairy, with very good rump and nice udder. Raffy produce a lot of milk with high components.

She exit from a **longlived cow's family with a very very good tipe.**

Her dam A. Aerostar Dawn EX 90 GMD lived in farm over 16 years and has 9 daughters all VG or EX with VG or EX in udder.

Raffy is in 2<sup>nd</sup> lact. and has beautiful daughters by **MORTY VG85** bred to Airraid, **JEFFERSON, MODEST, BUCKEYE** and **TOYSTORY**. She has also some bulls with this Sires.



**AQUILA AEREOSTAR DAWN TV EX90 VGMS**

1 latt. 305 days 11294 kg 3,40%gr 3,60%pr  
2 latt. 305 days 12363 kg 3,30%gr 3,30%pr  
3 latt. 305 days 13994 kg 3,50%gr 3,40%pr

**IN TOP COWS FOR**

**GMD**

**IN ITALY WITH 7 STARS**

Dawn is a great Aereostar daughter from VALID, a NED BOYmat. VANESSA's sister she is a tall and fancy uddered and produces a lot of milk and proteins. All daughters of Dawn are very high with PTF index.

Dawn has:

- 1 daughter by **PATRON EX90 VGMS GMD** (A.P. LISA)
- 2 daughters by **FORMATION**: one **VG88 VGMS**; one **EX92 EXMS** with very good daughters by DARLYN, SEPT. SOTRM, MAGNA VG87 in 2<sup>nd</sup> lact. and JOCKO BESN (A.J. Peach ) VG87.
- 1 daughter by **GIBBON VG85** (A.G. LORETTA ) with 2 STVEN's daughters both VG VGMS.



- 2 daughters by **MATTIE-G**: one **VG85** with daughter by BRITT VG ; one **EX91 VGMS** with daughter by FREELANCE.

- 1 beautiful daughter by **MAGNA VG88 VGMS** (A.M. RAFFY )
- 1 daughter by **BURT** bred to VIRZIL.

**DAWN is dam of AQUILA LABELLE LUI in top 100 bulls in Italy for PTF (index 2001/02).**

**AQUILA NED BOY VALID VG 85**  
LISA's grand dam.

## AQUILA PATRON LISA TV EX90 VGMS GMD



**VERY  
TRASMETTING  
AND LONGLIVED  
COW FAMILY**



**PATRON EX90 VGMS GMD x AEREOSTAR DAWN EX90 VGMS GMD x NED BOY VG85 x NEILVG88**

**1<sup>st</sup> lact. 305 days kg 11611 fat 3,40% prot. 3,30%**  
**2<sup>nd</sup> lact. 305 days kg 13811 fat 3,40% prot. 3,40%**  
**3<sup>rd</sup> lact. 305 days kg 13069 fat 3,45% prot. 3,25%**

LISA is an atipical Patron's daughter. She is very tall, strong, deep with nice udder and feet and legs.

With this caratters can produce a lot of milk and very good components. Lisa has :

- 2 daughters by **BRETT** : One **EX91 EXMS (Aquila Brett PREMISE )** available for flushing;  
 One **VG87 GPMS in 2<sup>nd</sup> lact.** with daughter by **BEST VG85 VGMS** at 2yrs.
- 2 daughters by **WEBSTER VG85 VGMS** with daughters by **MORTY VG87** with daughter by **Zesty**.
- 1 daughter by **R. MARSHALL VG85** with daughter by **CHAMPION VG85 VGMS** at 2yrs.
- 1 daughter by **FINLEY VG86 EXMS** with daughters by **BOLTON, JURUS** and **BILLION**.
- 1 daughter by **MANAGER**.
- 1 daughter by **ARTIC**.

**Show cow**



**AQUILA BRETT PREMISE EX91 EXMS in 4<sup>th</sup> lact.**

**Brett EX91 EXMS x Patron Lisa EX90 VGMS GMD x Aerostar D.EX90 VGMS GMD x Ned boy VG85 x Neil VG88**

**1<sup>st</sup> lact. 305 days kg 10668 fat 3,32% prot 3,25%**  
**2<sup>nd</sup> lact. 305 days kg 12345 fat 3,50% prot 3,45%**

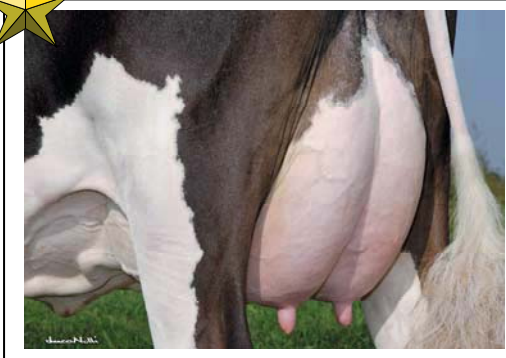
Premise is a Show cow with high index and is one of the best daughters of Lisa. She is a maternal sister of Sunshine. The result in show are very good with always in top 3 with best udder of class. She was one of candidate for Brussel 2004 and is one of ours favorite cows. Premise is a very complete cow in all caracters and her force point is a super udder.

Premise is in 4<sup>th</sup> lact .she has 2 daughters by **BUCKEYE**.



★ AQUILA FINLEY SUNSHINE VG86 EXMS at 2 years ★

SOLID  
COW



Finley VG86 EXMS x Patron Lisa EX90 VGMS GMD x Aerostar Dawn EX90 VGMS GMD x Ned Boy VG85 x  
x Neil Hilite VG88

★ 1<sup>st</sup> lact. 305 days kg 11854 fat 3,97% kg 491 prot 3,47% kg 429 ★

Production Capacity : milk +14,9% fat +23,1% prot +20,3%

We think that Sunshine is a super cow for herd that has all caracters to last long in farm. She is very strong in front, with **super feet and legs and exceptional udder**. She has also a very wide rump and she is very open rib. Sunshine family is a **longlived cows family with high productions**.

Her dam Lisa live in farm at about 10 years, her grand dam A. Aerostar Dawn lived in farm until over 16 years.

Sunshine has much **contracts with A.I. Stud** and she has daughters by **BOLTON, JURUS and BILLION**

Sunshine is bred to **RAMOS**.



★ AQUILA PATRON LISA EX90 VGMS  
GMD



1<sup>st</sup> lact.305 days kg 11611 fat 3,40% prot 3,30%  
2<sup>nd</sup> lact.305 days kg 13811 fat 3,40% prot 3,40%  
3<sup>rd</sup> lact.305 days kg 13069 fat 3,45% prot 3,25%  
4<sup>th</sup> lact.305 days kg 11702 fat 3,60% prot 3,25%

Lisa is a very trasmetting cow as her dam Dawn. All Lisa's daughters are very consistent cows for herd that combine perfectly dairy caracters and strength. Sunshine and Premise are best Lisa's daughters and they have high index with high tipe.

Lisa is available for flushing.



**AQUILA GARTER ROSALBA VG85 at 2 years**

**7th GENERATION  
VG or EX**

**LOW SOMATIC  
CELLS**



**HIGH  
PRODUCTION**

**FULL SISTER TO  
AQUILA GARTER  
LENNITZ  
In top 100 for PFT**

**PERSISTENCE IN  
PRODUCTION**

**Garter VG85 x Demand Merily EX90 VGMS GMD x Langs VG87 VGMS x Mascot VG87 x  
x Gene Bonnie VG86 VGMS GMD x Starwar EX91 EXMS x Neil Tracy EX90 VGMS  
1<sup>st</sup> lact. 305 days kg 11323 fat 3,84% fat kg 431 prot 3,35% prot kg 376**

Rosalba is much similar at Merily, she is a very complete cow, tall, very dairy, open rib with super feet and legs. Rosalba has high production with very good components. She was **in top cows in Italy for PFT, protein and milk** ('04-'05-'06). Rosalba has a nice daughter by **BEST VG85 VGMS at 2yrs** bred to BAXTER and heifers by **TOYSTORY** and **LOU**.

Her full sister **AQUILA GARTER RENETTA VG86** is a **milk machine cow**. Her production is :

**1<sup>st</sup> lact. 305 days Kg 11768 fat 3,34% fat kg 392 prot 3,37% prot kg 388  
2<sup>nd</sup> lact. 305 days Kg 14309 fat 3,87% fat kg 554 prot 3,41% prot kg 489**

She was **in top cows in Italy for PFT, protein, and milk**. (index '04-'05-'06).

Renetta has daughter by **BEST VG85 VGMS at 2yrs** bred to BOLTON and daughter by **GOLDWIN**. She has bull by **JOSE**.



**AQUILA MASCOT DIANNE VG87**  
Merily's Granddam

**AQUILA DEMAND MERILY EX90 VGMS GMD**  
Rosalba's dam.  
← **ONE OF OUR FAVORITE COWS**

**Demand EX90 x Langs VG87 x Mascot VG87 x Gene Bonnie VG86 GMD x Starwar EX91 GMD x Neil Tracy EX90 GMD**

**1<sup>st</sup> lact. 305 days kg 12449 fat. 3,20% kg 397 prot. 3,60% kg 438  
2<sup>nd</sup> lact. 305 days kg 13955 fat. 3,83% kg 535 prot. 3,40% kg 474  
3<sup>rd</sup> lact. 305 days kg 15187 fat. 4,02% kg 611 prot. 3,67% kg 558**

Merily is a beautyfull cow that is **the 6<sup>th</sup> generation of VG or EX** and was one of my best cow. She is very trasmetting cows She was a very production cow with super protein percentage and very low somatic cells.

**Merily produced in 2<sup>nd</sup> and 3<sup>rd</sup> lactation over kg 1000 of fat + prot.**

Merily has a very good temperament , is very quiet and is a pleasure work with her.

She is big, very dairy, open rib with super rump and feet and legs.

Merily since 4 years was **in top10 cows in Italy for protein** and she was **in top 100 cows for milk and PFT** ('03-'04-'05). She has:

- 2 daughters by **GARTER VG** (ROSALBA and RENETTA)**in top cows for milk and protein in Italy.**

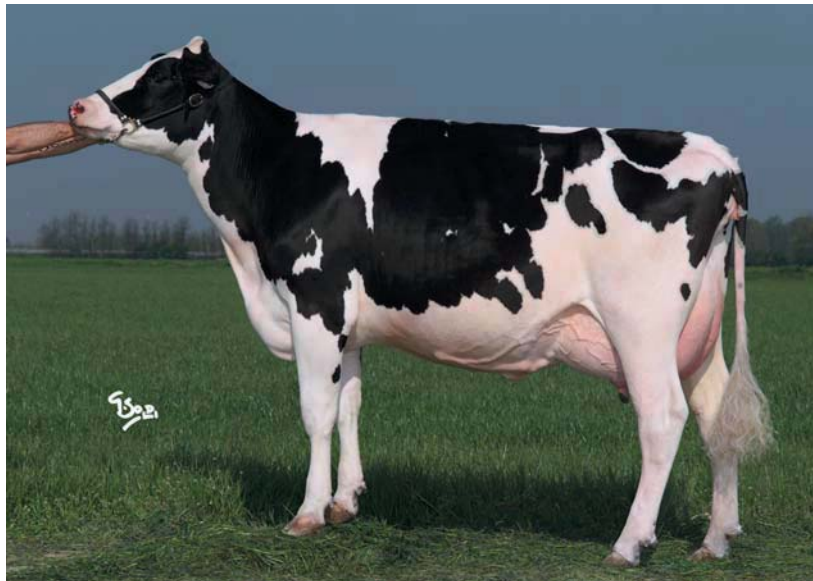
- 2 daughters by **MAGNA** : one **VG87 VGMS** bred to ZENITH and one **VG85 VGMS** with daughter by MODEST bred to Encino.

- 1 daughter by **LANCELOT** VG85 with daughter by ENCINO and bull by BOLTON.

Merily has a bull by **SHOTTLE** and she is dam of **A.GARTER LENNITZ** in **top 100 in Italy for PFT**.



**VERY STRONG  
COW WITH  
SUPER UDDER**



**4 COWS GMD  
IN HER  
PEDEGREE**

**Aaron VG89 VGMS x Belwood GMD VG87 VGMS x Mascot GP84 VGMS at 2yrs x Gene Bonnie VG86 VGMS**

1<sup>st</sup> lact. 305 days kg 11479 fat 3,30% fat kg 374 prot 3,51% prot kg 402

2<sup>nd</sup> lact. 305 days kg 13327 fat 3.60% fat kg 480 prot 3.50% prot kg 466

3<sup>rd</sup> lact. 218 days kg 10151 fat 3.50% prot 3.40% proj. 305 days kg 12483 fat kg 445 prot kg 421

Penelope is a very trasmetting cow.

She has a nice udder as others Aaron , but is atipicol Aaron because is very tall, open rib and strong in front.

Penelope is ours best Aaron daughters for index and was in top 100 cows in Italy for PFT(index '03-'04).

Penelope has :

- 4 daughters by **O-MAN ( VG,VG,VG,n.cl.)** with heifers by **TOYSTORY** and **WILDMAN** and pregnancies by **WATHA, CALYPSO, BAXTER, Mr. BURNS, PAGEWIRE** and ...

- 1 daughter by **ARTIC.**

Penelope is bred to **BAXTER.**

**AOUILA CLEO MELANIA TV EX91 VGMS in 3<sup>rd</sup> lact.**

**BEAUTYFULL  
COW**



**4 COWS GMD  
IN HER  
PEDEGREE**

**EWILLO BELMAN CLEO VGMS x BELWOOD IRIS VGMS x MASCOT VGMS x GENE BONNIE VGMS**

1<sup>st</sup> lact. 305d kg 10516 fat. 3,30% kg 350 prot. 3,40% kg 357

2<sup>nd</sup> lact. 305d kg 13308 fat. 3,40% kg 443 prot. 3,50% kg 466

3<sup>rd</sup> lact. 305d Kg 13591 fat. 4.60% kg 618 prot 3.40% kg 449

MELANIA is 1<sup>st</sup> daughter of IRIS and was a beautyfull cow with **6 generations of VG or EX in udder.**

She was one of our best cows for production with very high protein.

**In 3<sup>rd</sup> lact. Melania produce over kg 1000 of ( fat + prot.)**

**She combine perfectly Tipe, production and index.**

She is tall, long, strong, open rib with super dairy caracters and super udder. Melania has :

- 1 daughter by **JOCKO BESNE VG85** with daughters by BURT and CHAMPION in milk.

- 1 daughter by **Mr. SHIPS VG85 VGMS** with bull by SHOTTLE.

- 3 daughters by **MORTY**: One **VG85** with daughter by BOLTONE ; One n.cl. with bull by Zesty ; One bred to Shottle.

**HIGH  
PRODUCTION**



**LOW  
SOMATIC  
CELLS**



**WORLD  
CONTRACTS**

**O-Man x Aaron Penelope VG89 VGMS in 2nd lact.x Bellwood Iris VG87 VGMS GMD x Mascot GP84 VGMS x Gene VG86 VGMS GMD x Starwar EX91 EXMS GMD x Tracy Neil EX90 VGMS GMD**  
**1<sup>st</sup> lact. 305 days kg 12484 fat 3,83% fat kg 446 prot 3,63% prot kg 415**

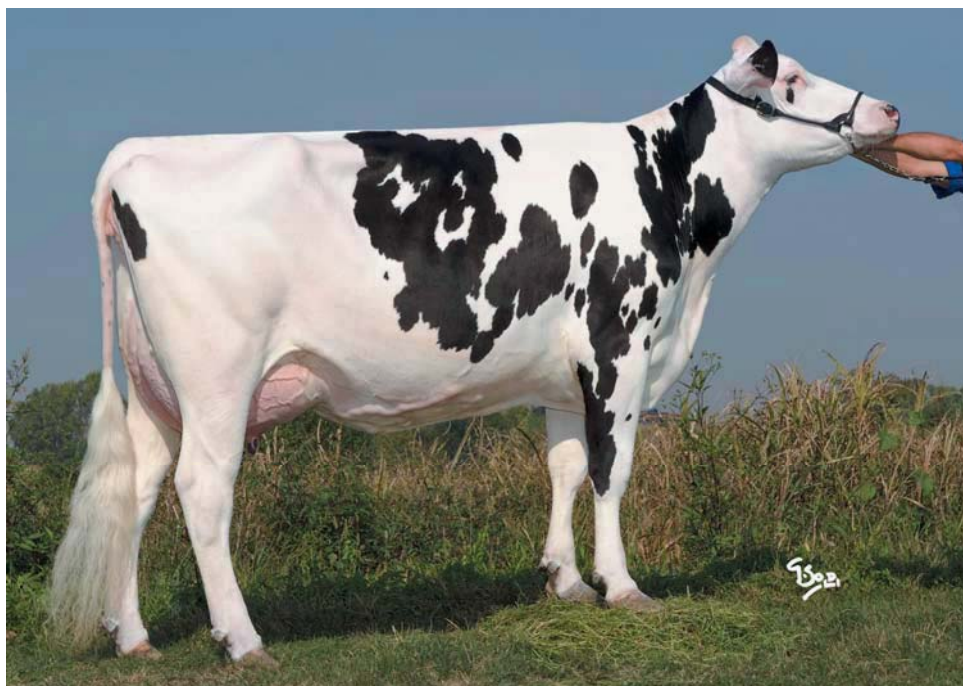
Virginia is an atipicol O-Man daughter, she is tall, big, strong and dairy with super feet and legs and nice udder. Virginia has much contracts around the world for embryos and bulls. She is full sister of others 3 O-Man daughters, 2 are VG and one is n.cl.. Virginia is **in top cows in Italy** and has **6 generations of VG in udder** and **4 cows GMD in pedigree**.

She has : 1 daughter by **TOYSTORY**, pregnancies by **CALYPSO**, **WATHA** and **Mr. BURNS**.

Virginia is at permanent flushing and nexts flushings I think are by **ZENITH**, **BAXTER**, **LAURIN** and **FOLLETO**.

**AQUILA O-MAN VITTORIA VG85 VGMS at 2 years**

**COMPLETE  
COW**



**VERY NICE  
UDDER**

**O-Man x Aaron Penelope VG89 VGMS in 2nd lact. x Bellwood Iris VG87 VGMS GMD x Mascot GP84 VGMS x Gene VG86 VGMS GMD x Starwar EX91 EXMS GMD x Tracy Neil EX90 VGMS GMD**  
**1<sup>st</sup> lact. 305 days kg 11377 fat 3,78% fat kg 431 prot 3,58% prot kg 407**

Vittoria is a full sister of Virginia. She is a dairy cow with super udder and feet & legs. Vittoria is **the 7<sup>th</sup> generation of VG in udder** and has **4 cows GMD in pedigree**. Vittoria has much contracts around the Europe.

She has Pregnancies by **WATHA** and **PAGEWIRE**.

Vittoria is **in top cows in Italy** and is bred to **PAGEWIRE**.

## AQUILA GARTER REBEL VG87 VGMS

# PEDEGREE TOTALLY OUTCROSS

LONGLIVED  
COWS  
FAMILY

LOW SOMATIC  
CELLS

4  
GENERATIONS  
LIFE AGAIN  
IN FARM



GATER VG87 VGMS x ADDISON VG87 VGMS x GOLDFINGER VG86 VGMS x  
x LUKE Fenice VG87 VGMS x GENE Bridget VG88 EXMS x VALIANT VG88 VGMS x  
x CHAIRMAN EX90 EXMS x MARVEX x COMET VG87

1<sup>st</sup> lact. 305 days kg 11414 fat 3,96% fat kg 449 prot 3,54% prot kg 401  
2<sup>nd</sup> lact. 305 days kg 13772 fat 3,76% fat kg 518 prot 3,40% prot kg 468

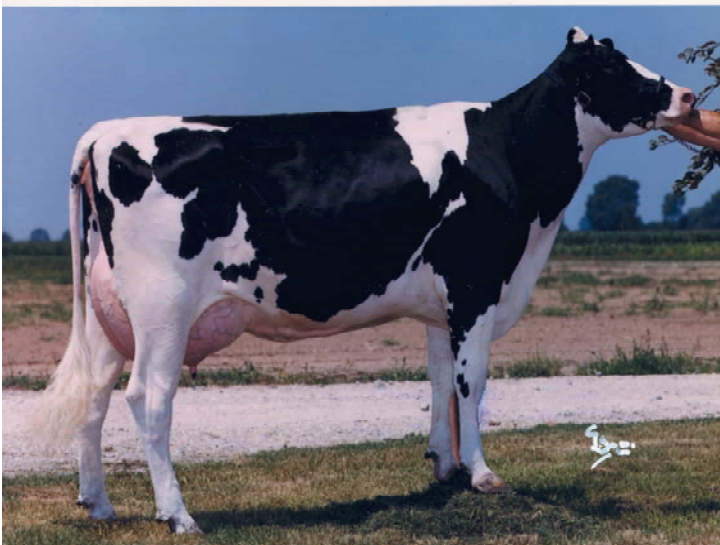
Rebel is a cow with blood in **pedegree total OUT LINE** whintout Mascot, Blackstar, Bellwood.  
She is the 7<sup>th</sup> generation of VG with VG or EX in mammary sistem.

Rebel is very dairy with very good udder and super feet and legs.

**The Rebel's family is much productive and is very longlived  
with 4 generations that to live much time farm.**

Rebel is **open for flushing** and she has bull by **BAXTER** and heifer by **JEFFERSON** .

## AQUILA LUKE FENICE VG 87 VGMS



1<sup>st</sup> lact. 305d kg 11280 fat 3,30% pr 3,40%  
2<sup>nd</sup> lact. 305d kg 12895 fat 3,40% pr 3,50%  
3rd lact. 305d kg 14281 fat 3,10% pr 3,40%  
4<sup>th</sup> lact. 305d kg 14377 fat 3,70% pr 3,40%  
5<sup>th</sup> lact. 305d kg 15094 fat 3,30% pr 3,40%  
6<sup>th</sup> lact. 305d kg 14858 fat 3,74% pr 3,30%  
7<sup>th</sup> lact. 305d kg 14186 fat 3,79% pr 3,36%  
8<sup>th</sup> lact. 305d kg 12733 fat 3,80% pr 3,45%

Fenice is a **very longlived cow** and **super production** cow that at 16 years is again in our herd and is in milk for her 9<sup>th</sup> lactation.

Fenice is Rebel's Grand Grand Dam.

**COWS FAMILY  
WITH  
HIGH PRODUCTION**

AQUILA  
HOLSTEIN

## BULLS EXIT FROM AQUILA HOLSTEIN COWS FAMILY

AQUILA  
HOLSTEIN

### WELCOM ERICK

**Garter x Amel x Aquila Fatal Ebony x Mascot**  
Erick is in top bulls list in US with over 2400lb in milk, 60 lb in protein and 1,50 in tipe. Exit from Bonnie Family.

### AQUILA PATRON LUCENTE TV EX 93

**Patron x Aquila Luke Galizia EX90 VGMS**  
2<sup>nd</sup> bull for TOP in U.K. and sire of son around the world.  
Very popular bull around the world. (Index '02 -'03 -'04 )  
Lucente is a bull that has high index for **production and udder**.  
Lucente has in pedigree **4 generations of EX and 3 cows GMD**

### AQUILA BLACKSTAR BENSON TV EX93

**Blackstar x Cleitus Vanessa**  
Benson was Vanessa's 1st son from BLACKSTAR and was one of the best bulls of "2nd CROP" for **ILQM, TIPE and UDC** in Italy '00-'01.  
Benson was also 1<sup>st</sup> bull for index and tipe in Switzerland '00.  
Benson is a very popular bull around the Europe.

### MONTOYA

**Marshall x Patron Leane VG89 EXMS x Vanessa**  
He is in top list in Germany for RZG and has high tipe

### AQUILA MARSHALL YUCON-et

**Marshall x Patron Leane VG89 EXMS x Vanessa**  
Yucan is **kkBB** and is in top 100 bulls in Italy with high production and nice udders.('06-'07).

### AQUILA WINCHESTER STIFF TV TL

**Winchester x Aquila Bellwood Iris VG87 GMD**  
Stiff exit from Bonnie's family. He is in top bull for PFT in Italy. (index 2004 over +2,00 in udder).

### AQUILA MASCOT DREAMER TV TL GM

**Mascot x Gene Bonnie VG86 VGMS GMD**  
Dreamer exit from Bonnie's family and was 1st bull in Italy for index. He also was in top bulls in Australia.

### AQUILA TRADITION TURBO

**Tradition x Aquila Valiant Quantità**  
Turbo exit from Bonnie's family and was in top bulls in Italy for index. He was very strong in udder, feet & legs and production.

### TIVOLI

**Tugolo x Aquila Luke Galizia EX90 VGMS GMD**  
Tivoli exit from Vanessa's family and is Lucente's maternal brother in Germany. Her daughters are very tall, dairy, with super feet and legs and with very good fat.

### AQUILA DETECTOR

**Aerostar x Aquila Gene Bonnie VG86**  
In top bulls for milk and protein in Italy and Germany '98-'99.

### AQUILA MASCOT DETAIL

**Mascot x Aquila Gene Bonnie**  
In top bulls for ILQM & protein in Italy '98-'99-'00.

### AQUILA LABELLE LUI CV

**Labelle x Aquila Aerostar Dawn**  
In top bulls in Italy for PFT '01-'02.

### JACINTO-et

**Jocko Besn x Fatal x Aquila Mascot Dama VG88**  
Jacinto is in **top 10 bulls in Gemany for RZG** (index '06-'07) and exit from Vanessa's Family.  
She is very high in production and protein.

### JELDER

**Jesther x Basar x Fatal x A. Mascot Dama VG88**  
Jacinto is in **top 10 bulls in Gemany for RZG** (index '06-'07) and exit from Vanessa's Family.  
He is a very complete bull and is Sire of Sons.

### AQUILA GARTER LENNITZ

**Garter x Demand Merily EX90 VGMS GMD**  
Lennitz is in top 50 bulls in Italy for PFT. He exit from Bonnie's Family and is a complete bull.

### AQUILA WELLS MAXIMUM CV

**Wells Catalist x Aquila Bellwood Iris VG87 GMD**  
Maximum is maternal brother of Stiff and is in top bull for PFT and protein in Italy from 2 years. (2003-2004 ).

### MONLUEL TL TV EX91

**Fatal x Aquila Mascot Desirè VG88 EXMS**  
Monluel exit from Vanessa's family .  
He is in top 100 bulls for INET in France ('03-'04-'05 ).  
Monluel is very popular in France and the Uneco has over 25 bulls in A.I. for progeny test.

### AQUILA MAJIC LUPEN

**Majic x Aquila Mascot Dottie VG87 VGMS**  
In top 10 bulls for index in Republic Ceka and  
In top 50 for PFT in Italy '00-'01.

### AQUILA LORD LILLY LADDIE TV TL

**Lord Lilly x Aquila Mascot destiny VG87 GMD**  
Laddie exit from Vanessa's family.  
He is in top bulls for TOP and Feet and legs in U.K. for 3 years ( '02-'03-'04 ).

### AQUILA NICK GLENN

**Nick x Blackstar Beta EX94 EXMS GMD**  
Glenn exit from Vanessa's family and has super tipe with daughters tall, long, dairy with nice udder.

### AQUILA HOLIDAY PANZER

**Holiday x Aquila Southwind Candy VG86 GMD**  
Panzer exit from Vanessa's family and was 2<sup>nd</sup> bull in Spanish '99-'00.  
He is also full brother of A.H. DAFFY and A.H. DANNIS in top 50 in UK '98-'99.

AQUILA  
HOLSTEIN

AQUILA HOLSTEIN

*Fast  
and In the right*

DIRECTION

AQUILA  
HOLSTEIN